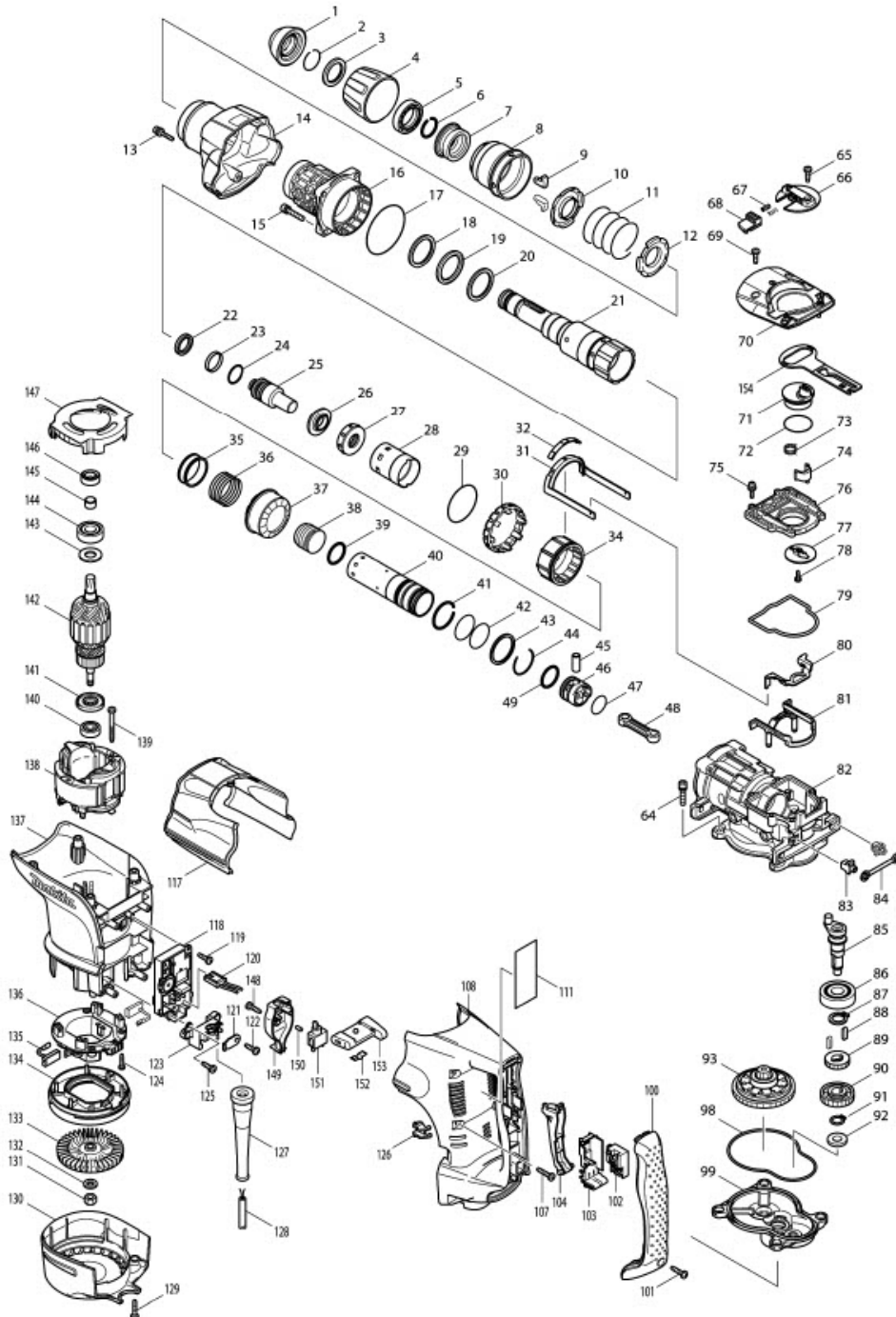


Part Diagram

Model No.HR4501C ROTARY HAMMER 45MM



Item	Sub	Parts No.	Parts Description	Qty
001-1		286285-4	TOOL HOLDER CAP	1
2		233948-3	RING SPRING 25	1
3		257280-1	RING 28	1
4		450064-8	CHUCK COVER	1
5		419002-9	SPACER	1
6		233948-3	RING SPRING 25	1
7		324752-2	CHUCK RING	1
8		450030-5	RELEASE COVER	1
9		310178-4	TOOL RETAINER	2
10		345804-6	SPRING GUIDE	1
11		233496-2	COMPRESSION SPRING 49	1
12		345804-6	SPRING GUIDE	1
13		922148-7	HEX. SOCKET HEAD BOLT M4X25	1
14		158301-1	BARREL COVER COMPLETE	1
15		922353-6	HEX.SOCKET HEAD BOLT M6X30	4
016-1		158576-2	BARREL COMPLETE	1
016-1	C10	213480-3	OIL SEAL 35	1
016-1	C20	214507-2	PLANE BEARING 36	1
016-1	C30	214601-0	PLANE BEARING 48	1
016-1	C40	233964-5	RING SPRING 50	1
016-1	C50	213604-1	O RING 50	1
17		213754-2	O RING 71	1
18		267357-4	FLAT WASHER 36	1
19		262135-7	RUBBER RING 36	1
20		267357-4	FLAT WASHER 36	1
21		324872-2	TOOL HOLDER	1
22		213980-3	X-RING 21	1
23		213431-6	FLUORIDE RING 28	1
24		213394-6	O RING 23	1
25		324802-3	IMPACT BOLT	1
26		324805-7	RING 19	1
27		424032-7	RUBBER RING 20	1
28		450024-0	SLIDE SLEEVE	1
29		213656-2	O RING 53	1
30		450031-3	LOCK SLEEVE	1
31		165465-4	LINK ARM	1
32		450032-1	LINK ARM GUIDE	1
34		324800-7	DRIVING SLEEVE	1
35		331599-7	RING 38	1
36		234024-6	COMPRESSION SPRING 39	1
37		227526-9	STRAIGHT BEVEL GEAR 35	1
38		324804-9	STRIKER	1
39		213981-1	O-RING 27	1
40		324803-1	CYLINDER 34	1
41		233956-4	RING SPRING 37	1
42		213460-9	O RING 35	2
43		257283-5	RING 38	1
44		233955-6	RING SPRING 36	1
45		331598-9	PIPE 10	1
46		450025-8	PISTON	1
47		213407-3	O RING 26	1
48		450026-6	CONNECTING ROD	1
49		213981-1	O-RING 27	1
64		922353-6	HEX.SOCKET HEAD BOLT M6X30	4
65		266192-7	TAPPING SCREW 4X14	1
66		419020-7	CHANGE LEVER	1
67		233436-0	COMPRESSION SPRING 3	1
68		419009-5	LOCK BUTTON	1

Item	Sub	Parts No.	Parts Description	Qty
69		266192-7	TAPPING SCREW 4X14	2
70		318171-2	CRANK CAP COVER	1
071-1		450687-2	CRANK LEVER	1
072-3		213534-6	O RING 36	1
072-4		213515-0	O RING 36	1
73		233506-5	TORSION SPRING 16	1
74		310207-3	LINK LEVER	1
75		911133-5	PAN HEAD SCREW M4X18	6
076-1		455525-3	CRANK CAP	1
77		345778-1	RETAINER PLATE	1
078-1		265014-8	+ PAN HEAD SCREW M4X12	1
79		424034-3	SEAL RING	1
80		345822-4	LINK PLATE	1
81		450029-0	LINK PLATE GUIDE	1
82		158298-4	CRANK HOUSING COMPLETE	1
83		419008-7	FIX GUIDE	2
84		423345-3	CUSHION PLATE	1
85		324801-5	CRANK SHAFT	1
86		211279-0	BALL BEARING 6303LLU	1
87		961057-5	RETAINING RING S-17	1
88		254220-0	KEY 5	2
89		227181-7	SPUR GEAR 19	1
90		226655-5	HELICAL GEAR 36	1
91		961054-1	RETAINING RING S-14	1
92		253180-3	FLAT WASHER 10	1
93		125415-1	TORQUE LIMITER ASS'Y	1
98		424033-5	SEAL RING	1
99		158299-2	GEAR HOUSING COMPLETE	1
100		419796-6	HANDLE COVER	1
101		265995-6	TAPPING SCREW 4X18	1
102-1		650676-9	SWITCH C3PA-1111	1
103		154626-1	SWITCH HOLDER COMPLETE	1
104		419028-1	SWITCH LEVER	1
107		266041-8	TAPPING SCREW 5X25	6
108		450039-7	HANDLE	1
111		864088-2	HR4501C NAME PLATE	1
117		450037-1	CRANK HOUSING COVER	1
118		631751-0	CONTROLLER	1
119-1		266901-4	TAPPING SCREW 4X14	1
120		638510-3	LEAD UNIT	1
121		687169-3	STRAIN RELIEF	1
122		266192-7	TAPPING SCREW 4X14	1
123		419024-9	CORD CLAMP BASE	1
124		265995-6	TAPPING SCREW 4X18	4
125-1		266901-4	TAPPING SCREW 4X14	1
126		419774-6	LENS	1
127		682560-0	CORD GUARD 10	1
128		692623-4	POWER SUPPLY CORD 1.5-2-4.0	1
129		266041-8	TAPPING SCREW 5X25	2
130		450035-5	REAR COVER	1
131		252178-7	HEX. NUT M8-12	1
132		253165-9	FLAT WASHER 8	1
133		240016-5	FAN 90	1
134		419782-7	FAN GUIDE	1
135-1		195844-2	CARBON BRUSH CB-175	1
136-1		632D00-2	BRUSH HOLDER UNIT	1
137		450041-0	MOTOR HOUSING	1
138		636313-9	FIELD 220-240V	1
139		266046-8	TAPPING SCREW 5X50	2

Item	Sub	Parts No.	Parts Description	Qty
140		210059-1	BALL BEARING 6000DDW	1
141		681642-5	INSULATION WASHER	1
142		517768-6	ARMATURE ASS'Y 220-240V	1
142	D10		INC. 140,141,145	
143		267025-9	FLAT WASHER 15	1
144		211238-4	BALL BEARING 6202LLU	1
145		331596-3	SLEEVE 12	1
146		213231-4	OIL SEAL 15	1
147		450033-9	BAFFLE PLATE	1
148		266192-7	TAPPING SCREW 4X14	1
149		419786-9	SWITCH BOX	1
150		263027-3	RUBBER PIN 4	1
151		651418-4	SWITCH ST115A-40	1
152		232209-8	LEAF SPRING	1
153		154635-0	SLIDE LEVER COMPLETE	1
154		450042-8	CONTROL PLATE	1
155		331840-8	SHOULDER SLEEVE 19	1
156		819362-3	CLEAR LABEL	1
A01		158131-0	GRIP 36 COMPLETE	1
A01-1		135209-6	GRIP 36 ASS'Y	1
A01-1	C10	158131-0	GRIP 36 COMPLETE	1
A01-1	D10		INC. A06-A12	
A02-3		196186-7	PLASTIC CASE SET	1
A02-3	C10	892399-5	INDICATION LABEL	1
A03-1		194683-7	GREASE VESSEL SET	1
A04		134890-0	SIDE HANDLE 68 ASS'Y	1
A04	C10	151769-0	SIDE HANDLE 68 COMPLETE	1
A04	C20	252640-2	WING NUT M8	1
A04	C30	265439-6	HEX. BOLT M8X150	1
A04	C40	417002-3	SIDE HANDLE CAM	2
A04	C50	417003-1	SIDE HANDLE	1
A05		443122-7	CLOTH	1
A06		265701-9	THUMB SCREW M6X14	1
A07		266163-4	CUP SQUARE NECK BOLT M8X80	1
A08		321248-4	DEPTH GAUGE	1
A09		344491-8	GRIP SPRING 68	1
A10		344492-6	PLATE	1
A11		416299-1	SIDE GRIP BASE 68	1
A12		931302-2	HEX. NUT M6	1
A14		892060-4	HR4501C PLASTIC CASE LABEL	2
B01		195210-3	HAMMER SERVICE KIT SET	1
B01	C10	181490-7	HAMMER GREASE 30G	2
B01	D10		INC. 1,22-24,39,49,135	