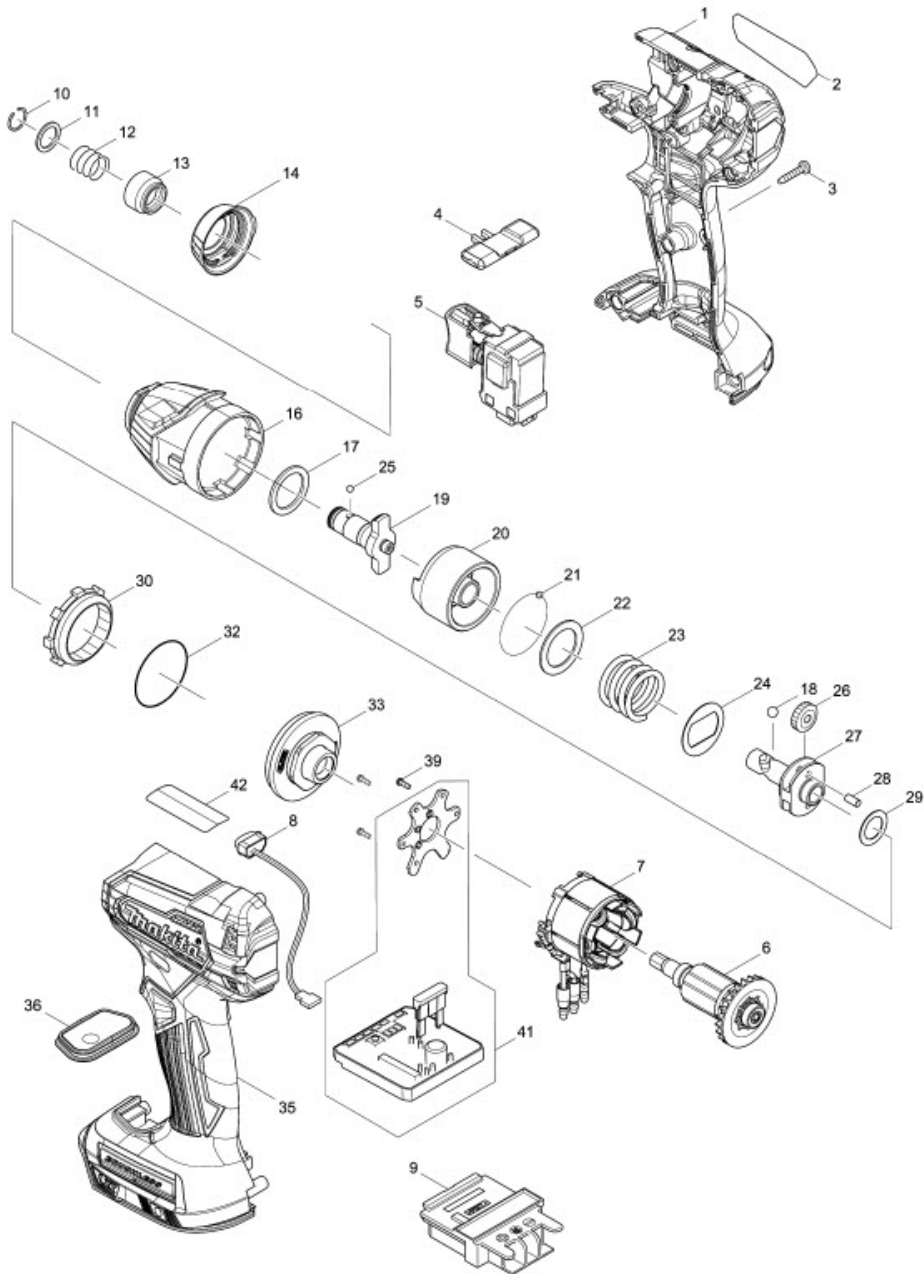


Part Diagram

Model No.DTD155 CORDLESS IMPACT DRIVER



Item	Sub	Parts No.	Parts Description	Qty
1		183G71-5	HOUSING SET	1
1	C10	252126-6	HEX. LOCK NUT M4-7	2
1	D10		INC. 35	
2		853G07-5	DTD155 NAME PLATE	1
002-1		857L52-2	DTD155 NAME PLATE	1
3		266429-2	TAPPING SCREW 3X16	9
4		455053-8	F/R CHANGE LEVER	1
5		143975-1	SWITCH COMPLETE	1
6		619415-6	ROTOR	1
006-1		619415-6	ROTOR	1
7		629233-4	STATOR	1
8		620521-2	LED CIRCUIT	1
9		643860-3	TERMINAL	1
10		231965-7	RING SPRING 10	1
11		267143-3	FLAT WASHER 11	1
12		233005-7	COMPRESSION SPRING 13	1
13		326803-7	BIT SLEEVE	1
14		424914-3	BUMPER	1
16		144132-4	HAMMER CASE COMPLETE	1
17		261159-0	NYLON WASHER 19	1
18		216002-8	STEEL BALL 4.8	2
19		326629-7	ANVIL N	1
20		324894-2	HAMMER	1
21		216019-1	STEEL BALL 3	24
22		267380-9	FLAT WASHER 20	1
23		232326-4	COMPRESSION SPRING 21	1
24		267813-4	WASHER 21	1
25		216019-1	STEEL BALL 3	2
26		221437-0	SPUR GEAR 17	2
27		324897-6	SPINDLE	1
28		268217-3	PIN 3.5	2
29		253052-2	FLAT WASHER 12	1
30		227316-0	INTERNAL GEAR 43	1
32		213479-8	O RING 33	1
33		141893-7	BEARING BOX COMPLETE	1
35		183G71-5	HOUSING SET	1
35	C10	252126-6	HEX. LOCK NUT M4-7	2
35	D10		INC. 1	
36		144137-4	SWITCH PLATE COMPLETE	1
39		266490-9	TAPPING SCREW PT 2X6	3
41		620586-4	CONTROLLER	1
43		857L53-0	DTD155 SERIAL NO. LABEL	1
A01		266622-8	+ TRUSS HEAD SCREW M4X12	1
A02		346317-0	HOOK	1
A03B		***DC18RC	DC18RC FAST CHARGER	1
A04B		197265-4	BATTERY BL1840B SET	2
A04-1B		197265-4	BATTERY BL1840B SET	2
A05B		450128-8	BATTERY COVER	1
A06B		141856-3	PLASTIC CARRYING CASE COMPLETE	1
A06B	C10	162302-3	LATCH	2
A06B	C20	324207-7	SHAFT	1
A06B	C30	451749-9	HANDLE	1