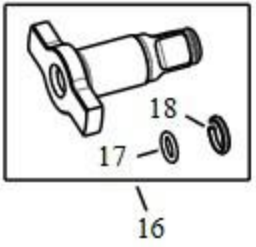




NOTES:

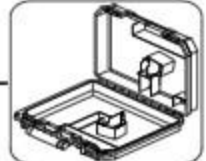
- 2. TORQUE TO BE 4.5 ± 0.3 NM
- 3. TORQUE TO BE 1.7 ± 0.2 NM
- 4. TORQUE TO BE 0.9 ± 0.2 NM
- 5. TIGHTEN SCREWS TO 0.5 NM ± 0.1 NM.



FOR REFERENCE
REFER TO PARTS LIST

871


866


861




#1 - [HOUSING SA](#)

- Part # N921749 i

#2 - [MOTOR & SWITCH SA](#)

- Part # NA325986 i

#3 - [MOUNT](#)

- Part # N864724 i

#4 - [SCREW](#)

- Part # N042665 i

#5 - [ACTUATOR FWD/REV](#)

- Part # N865539 i

#6 - [DETENT](#)

- Part # N403227 i

#7 - [ROLL PIN](#)

- Part # N071836 i

#8 - [SCREW](#)

- Part # 330019-04 i

#9 - [ISOLATOR](#)

- Part # NA169892 i

#10 - [GEARCASE](#)

- Part # N846042 i

#11 - [O RING](#)

- Part # N411414 i

#12 - [BEARING](#)

- Part # N158641 i

#13 - [INTERGEAR](#)

- Part # N846040 i

#14 - [RING](#)

- Part # N888542 i

#15 - [RUBBER SEAL](#)

- Part # N846523 i

#16 - [ANVIL ASSEMBLY](#)

- Part # NA325987 i

#17 - [O RING](#)

- Part # 050056-00 i

#18 - [CIRCLIP](#)

- Part # 086947-00 i

#19 - [PIN](#)

- Part # N756784 i

#20 - [GEAR](#)

- Part # NA031992 i

#21 - [TRANSMISSION SA](#)

- Part # NA325989 i

#22 - [CARRIER](#)

- Part # NA201540 i

#23 - [BALL STEEL](#)

- Part # NA091720 i

#24 - [BUMPER](#)

- Part # N745990 i

#25 - [WASHER](#)

- Part # N745989 i

#26 - [WASHER](#)

- Part # N745984 i

#27 - [SPRING](#)

- Part # N745982 i

#28 - [WASHER THRUST](#)

- Part # N745996 i

#29 - [BALL STEEL](#)

- Part # 000475-00 i

#30 - [IMPACTOR](#)

- Part # NA100963 i

-

#31 - [WASHER](#)

- Part # N735836 i

#32 - [NOSE SA](#)

- Part # NA325990 i

#33 - [WASHER](#)

- Part # 90607886 i

#34 - [WASHER](#)

- Part # N783664 i

#35 - [SCREW](#)

- Part # NA407885 i

#36 - [RATING LABEL](#)

- Part # NA303060 i

#37 - [LABEL](#)

- Part # NA303066 i

#38 - [LABEL](#)

- Part # NA352854 i

#41 - [INSERT](#)

- Part # N787996 i

-

#42 - [SCREW](#)

- Part # N831593 i

- #43 - [END CAP](#)
-
- Part # N893052 i

#800 - [GREASE](#)

- Part # 284778-00 i